



NEW BUILD - 9m Sport Sailing Yacht.

Listing ID: 1251

DESCRIPTION:	NEW BUILD - 9m Sport Sailing Yacht
DATE LAUNCHED:	12 weeks from contract signing
LENGTH:	9.14m (29ft 11in)
BEAM:	3.36m (11ft)
DRAFT:	2.22m (7ft 3in)
LOCATION:	ex factory, China
BROKER:	Franklin Taylor
PRICE:	USD 53,600 ex factory

General Description

The HT 90 sail boat was designed by Kevin Dibley who is one of New Zealand's pre-eminent designers of racing yachts and the winner of the 2017 Yacht Designer of the Year Award at the recent Asian Marine and Boating Awards.

This 9m sail boat is built in Xiamen, China at the Amoy yard with 30 years' experience building composite vessels. It comes ready to sail and can be shipped safely worldwide in a 40HQ container

Specification

AOL: 9.14m
Beam: 3.36m
Draft: 2.22m
Ballast lead: 1000kg
Mainsail: 28m²
Boat weight: 3230kg
Foresail: 22m²

Deck

Harken top winch with winch wrench
Deck Stainless steel chain plate
Harken foresail control system
Harken ball sail control system
S.S.forward guardrail with Nav.light
Stainless steel side rail with 4 ropes
FRP steering handle with ext rod 1 set
Deck hatch with seal rubber
Engine control box handle
Deck self drainage
Stainless steel cleats 4
Harken mainsail control system
Deck Inspection hatches
S.S.stern guardrail with Nav. light
Stern guardrail rope 1 piece
Suspended rudder
Entrance hatch with acrylic insert board

Interior

Stem storage with bulkhead hatch
Forward cabin with deck hatch
Forward cabin with V sharp berth
12V DC distribution system
Storage lockers under all seats and berth
Toolkit with one set of tools
S.S. entrance handrail and stairs
Main cabin with both sides seats
LED cabin light 1 set
DC switch board

Engine room

Stainless steel outboard engine base
Room for inboard engine and outboard propeller
15HP outboard engine 1 set
Locker for inside petrel tank

Mast and Rigging

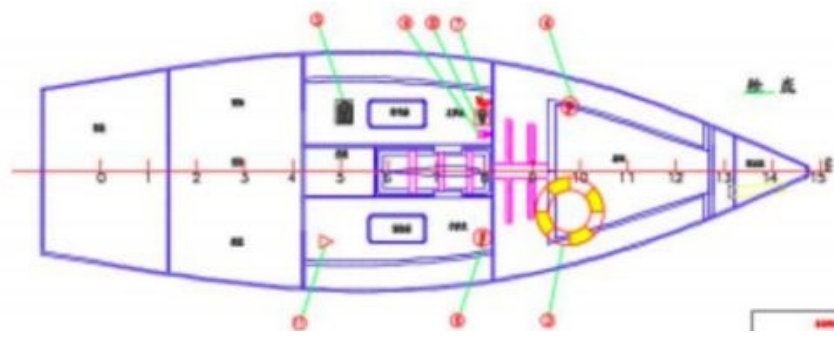
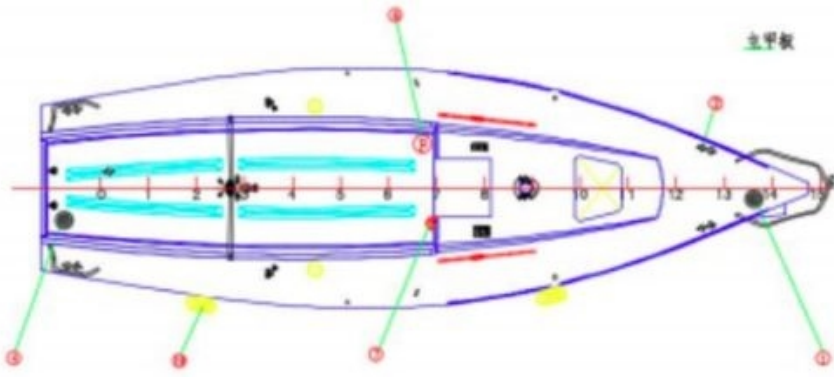
Selden mast ,boom and carbo ball boom
1X19 S.S. rope 7 piece
Facnor foresail re-tractor
Main sail, fore sail and ball sail halyard
All other ropes (rope list)
Aluminum mast rig
Adjusted stern chain
Mast-head weathervane
Sails accused of rigging
Ball boom control system

Sail

28 Square meter polyester main sail
22 Square meter polyester fore sail with observation window and indicator strip
Ball sail

Options

Electric bilge pump 1 set
Float switch 1 set
Nav.instrument:Raymarine wind wane
Nav.instrument:Raymarine speedometer
Detector 1 set
Battery 1 set
Anchor and chain
Cushion:main sail cover
Cushion:main cabin seats 2 piece
Cushion:fore cabin berth cushion
Cushion:stem cabin berth cushion
Cushion:boat cover
CCS and other safety equipment require
Compass
Yanmar 15HP outboard engine 1 set
Hull bottom painting
Handle GPS



IMPORTANT: The Company offers the details of this vessel in good faith but cannot guarantee or warrant the accuracy of this information nor warrant the condition of the vessel. A buyer should instruct their agents, or their surveyors, to investigate such details as the buyer desires validated. This vessel is offered subject to prior sale, price change, or withdrawal without notice.

NEW BUILD - 9m Sport Sailing Yacht. Images



