



## NEW BUILD - 8m Sport Sailing Yacht .

Listing ID: 1249

<b>DESCRIPTION:</b>	8m Sport Sailing Yacht
<b>DATE LAUNCHED:</b>	6 weeks from signed contract
<b>LENGTH:</b>	8.00m (26ft 2in)
<b>BEAM:</b>	2.51m (8ft 2in)
<b>DRAFT:</b>	1.49m (4ft 10in)
<b>LOCATION:</b>	ex factory, China
<b>BROKER:</b>	Franklin Taylor
<b>PRICE:</b>	USD 42,800 ex factory

### General Description

This 8m composite sail boat was designed by Jan Year and built by New Cruiser Yachts, Xiamen, China. This vessel is ready to sail at an excellent price.

#### Specification

LOA: 8.00m  
 Draft: 1.49m  
 Beam: 2.51m  
 Ballast: 570kg  
 Mail sail: 20.9m<sup>2</sup>  
 Boat Weight: 1500kg  
 Foresail: 13.7m<sup>2</sup>  
 Full loading weight: 1900kg

#### Deck

Harken winch 2 sets  
 Deck S.S. chain plate  
 Harken foresail control system  
 Harken ball sail control system  
 S.S. forward handrail with Nav light  
 S.S. side pod with rail rope 4 set  
 FRP steering handle with ext rod 1 set  
 Deck hatch with seal rubber  
 Deck self drainage  
 S.S cleats 4  
 Harken main sail control system  
 Deck inspection hatches  
 S.S. stern handrail with Nav light  
 Stern S.S rail rope 1 set  
 FRP removable rudder blade, tiller  
 Entrance hatch with acrylic insert board

#### Interior

Stem storage with bulkhead hatch  
 Forward cabin with deck hatch  
 12V DC distribution system  
 Forward cabin with V sharp berth  
 Main cabin with both sides seats  
 LED cabin light 1 set  
 Storage lockers under all seats and berth  
 Toolkit with one set of tools  
 DC switch board

#### Engine Room

Stainless steel outboard engine bracket  
 Locker inside for outboard engine

Locker for inside petrel tank

### Mast and Rigging

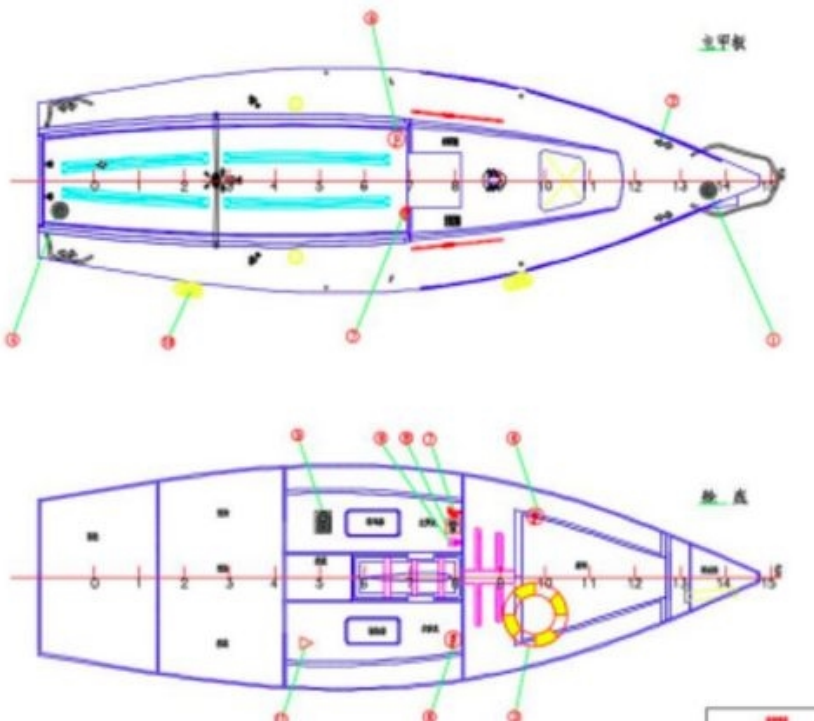
Spacraft aluminum mast and boom  
S.S rope 7 sets  
Facnor foresail re-tractor  
Main sail, fore sail and ball sail halyard  
All other ropes  
Spacraft aluminum mast rigging 4 sets  
Adjustable stern chain Dyneema  
Mast-head weathervane  
Sails accused of rigging  
Ball boom control system

### Sails

20.9 Square meter polyester main sail  
13.7 Square meter polyester fore sail with observation window and indicator strip  
Ball sail

### Options

Electric bilge pump 1 set  
Float switch 1 set  
Nav. instrument: Raymarine wind wane  
Nav. instrument: Raymarine speedometer  
Detector 1 set  
Battery 1 set  
Anchor and chain  
5HP outboard engine 1 set  
Hull bottom painting  
Handle GPS  
Cushion: main sail cover  
Cushion: main cabin seats 2 piece  
Cushion: fore cabin berth cushion  
Cushion: stern cabin berth cushion  
Cushion: boat cover  
CCS and other safety equipment require  
Compass



**IMPORTANT:** The Company offers the details of this vessel in good faith but cannot guarantee or warrant the accuracy of this information nor warrant the condition of the vessel. A buyer should instruct their agents, or their surveyors, to investigate such details as the buyer desires validated. This vessel is offered subject to prior sale, price change, or withdrawal without notice.

NEW BUILD - 8m Sport Sailing Yacht . Images





