



## Two x 90m Self Elevating Units for Resale or Charter

Listing ID: 2137

<b>DESCRIPTION:</b>	Two x 90m Self Elevating Units for Resale or Charter
<b>LENGTH:</b>	45.65m (150ft)
<b>BEAM:</b>	40.70m (133ft)
<b>DRAFT:</b>	3.40m (11.15ft) Full load
<b>LOCATION:</b>	China
<b>BROKER:</b>	Richard Pierrepont

### General Description

#### Classification and Regulation

Approved by CCS: CSA Self-elevating Work over Unit: Thruster: HELDK  
 Designed as ABS: A1 Self-elevated Unit (Well-Intervention), AMS-NP, CRC

#### Regulation:

CCS (Rules for Material and Welding (2012), including amendments of 2014  
 IMO code for the construction and equipment for mobile offshore drilling units, 2009  
 SOLAS Consolidated Edition 2009.  
 Marpol Consolidated Edition, 2011.  
 The Convention on the international regulations for prevention of collisions at Sea, 1972 and amendments international Convention on Load in 1966, including Protocol of 1988.  
 International Convention on Tonnage Admeasurement 1969.  
 IMO International Convention on the control of harmful antifouling systems.  
 Rules on operation certification of small aircraft commercial transport operators, 2005 (China Civil Aviation Regulations-135).

#### General

Max Operating Water Depth: 50m/164ft  
 Drilling depth: 5500m(3-½" Oil pipe)  
 4100m (4-½" Oil pipe)  
 Max Speed: 5 knots  
 Length hull: 45.65m / 150ft  
 Breadth hull: 40.70m / 133ft  
 Depth hull: 5.00m / 16.4ft  
 Design draft (full load): 3.40m / 11.15ft  
 Design draft (light load): 3.20m / 10.5ft  
 Free deck: 400sqm/4306 sq. ft  
 Variable load: 1100t

#### Jacking System

Leg number/type: 3/Tubular  
 Length/Type: 76m / 250ft (Rack and Pinion)  
 Spud can: 9.6m / 31.5ft  
 Drive: Electrical and Hydraulic  
 Jacking speed: 0.5m/min (hull)  
 1.2m/min (leg)

#### Cantilever System

Longitudinal reach: 12.2m / 40ft  
 Transverse reach: ±3.5m / 11.5ft

#### Work-over Equipment

Derrick height: 36m / 118  
 Derrick base: 7.3mx7.3mx33m

Hook load: 1580kN / 150ton  
Mud pumps: 2x580kW / 778hp  
Rotary table: 27-1/2", 27kN.m  
Draw works: 478kW / 650hp  
BOP: 13 5/8", 5000psi  
Top drive: Optional  
Burner beam: 80 inch

#### **MUD Treatment System**

Solid control system: 1xShale Shaker  
6xMixer, 1xVacuum Degasser

#### **Communication Equipment**

VHF: 2xJRC JHS-7705  
SSB: 1xJRC JSS-2250  
Aero VHF station: 1xICOM  
Inmarsat-C station: 1xJRC JUE-87

#### **Safety Systems**

Fire and gas detector and suppression system throughout the entire lift boat.  
2x65 person capacity totally enclosed lifeboat  
4x25 person capacity inflatable life rafts

#### **Tank Capacities**

Drill water: 157m<sup>3</sup> / 5544 cu.ft  
Potable water: 277m<sup>3</sup> / 9782 cu.ft  
Preload: 2513m<sup>3</sup> / 88746 cu.ft  
Liquid mud: 219m<sup>3</sup> / 7734 cu.ft  
Brine: 157m<sup>3</sup> / 5544 cu.ft  
Sewage: 31m<sup>3</sup> / 4803 cu.ft

#### **Accommodation**

POB: 62 (14x4p, 1x2p, 3x1p)  
Meeting room: 1  
Hospital: 1

#### **Machinery**

Main Engine: 3x1100kW / 1475hp  
Emergency engine: 1x500kW / 670.5hp  
Azimuth thrusters: 2x1100kW / 1475hp  
Side thruster: 1x350kW / 469hp  
DPS: Kongsberg DP-0

#### **Cranes**

Deck cranes: 2x 20t @25m (3t@30m)  
Anchor winch: 1 x 150kN@9m/min  
Tugger winch: 1 x 50kN@12m/min  
1 x 30kN@12/min

#### **Helideck**

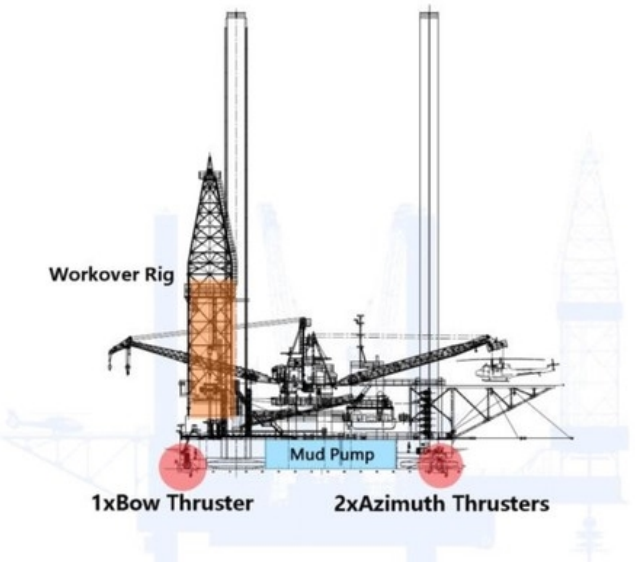
Helicopter: Dolphin A5365N  
Dimensions: 14.0mx14.0m (46ft x 46ft)  
Fire Fighting System: AFFF

#### **Navigation Equipment**

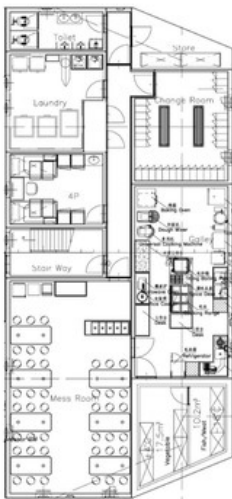
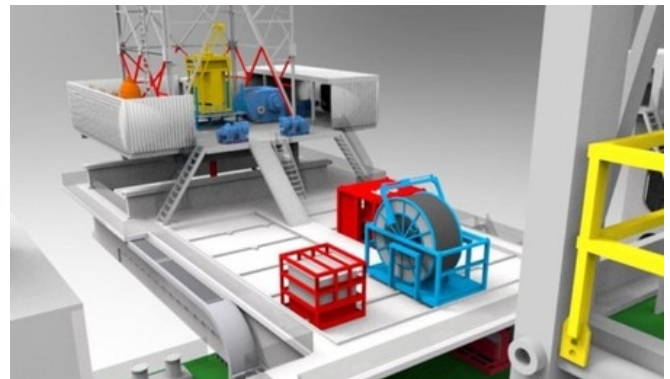
1xRadar X-Band  
1xWeather facsimile  
1xNavtex receiver  
1xGyro compass  
1xMagnetic compass  
1xECDIS

**IMPORTANT:** The Company offers the details of this vessel in good faith but cannot guarantee or warrant the accuracy of this information nor warrant the condition of the vessel. A buyer should instruct their agents, or their surveyors, to investigate such details as the buyer desires validated. This vessel is offered subject to prior sale, price change, or withdrawal without notice.

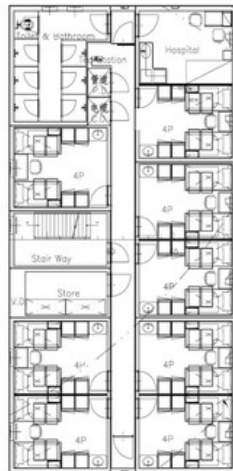
## **Two x 90m Self Elevating Units for Resale or Charter Images**



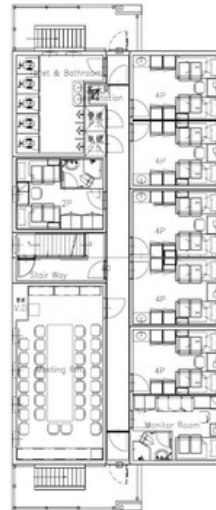
Available Deck Space ~500m<sup>2</sup>  
 Drilling Floor with Workover Rig



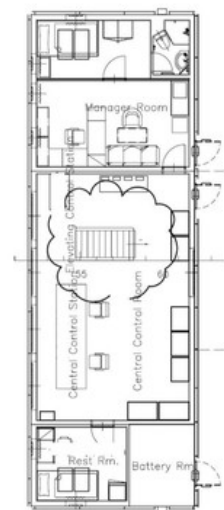
Upper Deck



A Deck



B Deck



C Deck